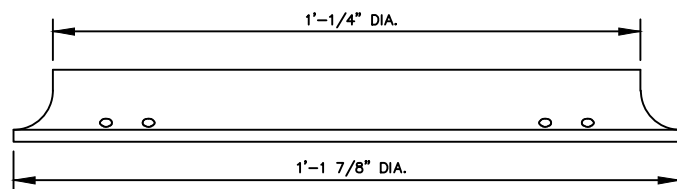
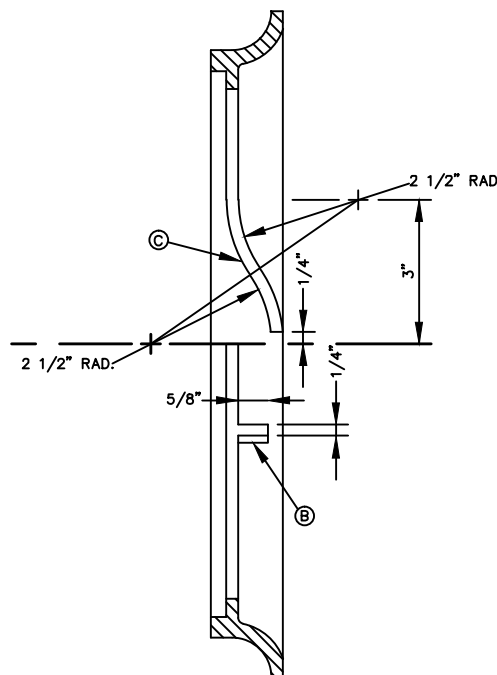


TOP VIEW



SIDE VIEW



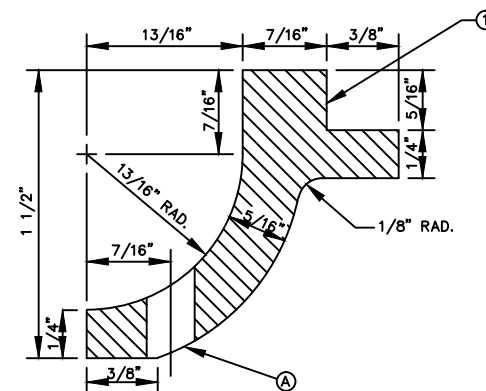
SECTION A-A

GENERAL NOTES:

1. MATCHING SURFACES TO BE FINISHED OF ANY IRREGULARITIES THAT WOULD PREVENT A SNUG FIT.
2. CASTING TO BE SMOOTH AND VOID OF AIR HOLES.
3. METER BOX RING WEIGHT = 7 LBS.
4. METER BOX RING MADE OF CAST IRON.

CONSTRUCTION KEY NOTES:

- A. 1/4" DIAMETER HOLES FOR ANCHORING RING TO CONCRETE METER BOX.
- B. LUG STOP
- C. LOCKING LUG SLIDE



SECTION B-B

STANDARD
DETAIL

DATE: 1/1995
REV: 8/10/2006

METER BOX RING FOR
TYPE "A" & "B" METER BOXES

N.T.S.



DETAIL No.
300